

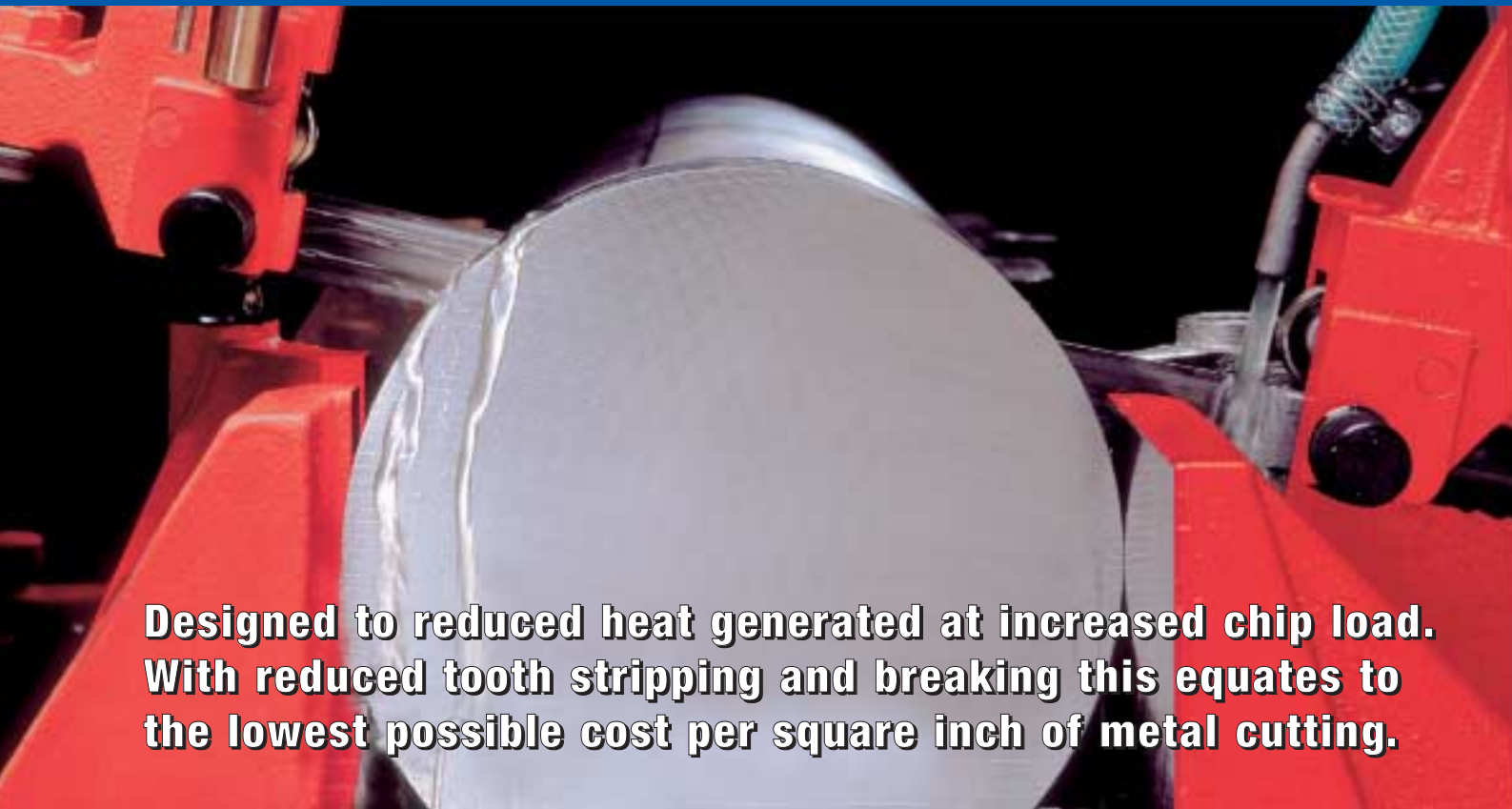
# CHIPBREAKER

Wear resistance **★★★★**

Chipping resistance **★★★★**

Edge material: M42 Cobalt high-speed steel

Hardness : Hv 950



**Designed to reduced heat generated at increased chip load. With reduced tooth stripping and breaking this equates to the lowest possible cost per square inch of metal cutting.**

## Applicability

= Break-in area / 1000 cm<sup>2</sup>

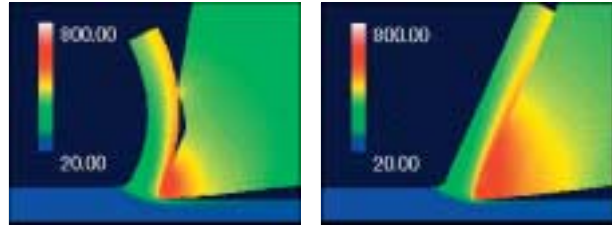
Bundled small diameter material	Mild steel, Non-ferrous metal			Tool steel, Prehardened steel			Hot work die steel, Stainless steel		
	Small <100 mm	Small <100 mm	Medium 100-400 mm	Large >400 mm	Small <100 mm	Medium 100-400 mm	Large >400 mm	Small <100 mm	Medium 100-400 mm
<ul style="list-style-type: none"> <li>• 1.0301, 1.1274, 1.0102</li> <li>• 1.1161, 1.1260</li> <li>• 1.7218</li> <li>• 1.5066, 1.5223</li> </ul>	<ul style="list-style-type: none"> <li>• 1.5406, 1.5419</li> <li>• 1.6955</li> <li>• 1.0711, 1.0718</li> </ul>			<ul style="list-style-type: none"> <li>• 1.1545, 1.1663</li> <li>• 1.2833, 1.2341</li> <li>• 1.2735, 1.2330</li> <li>• 1.2545, 1.2714</li> <li>• 1.2303, 1.2510</li> <li>• 1.2842, 1.2379</li> <li>• 1.2080, 1.3355, 1.3357</li> <li>• 1.3501, 1.3505</li> </ul>			<ul style="list-style-type: none"> <li>• 1.2343, 1.2344</li> <li>• 1.2581, 1.2587</li> <li>• 1.4571, 1.4300</li> <li>• 1.4301, 1.4006</li> <li>• 1.4021, 1.4016</li> <li>• 1.4542, 1.4564</li> </ul>		

## Features



- Reduced heat generated at increased chip loads
- Prevents scoring on gullet surface
- Reduced chip weld
- Reduced backing fatigue

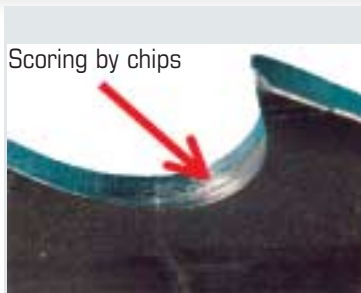
## Benefit



Reduced red heat area versus conventional blades

- Higher cutting rates
- Increased blade life
- Reduced tooth stripping
- Reduced blade breakage

## Tooth Selection



	Width of cut							
	100	200	300	400	500	600	800	1000
Structural Steel	3/4	2/3	1.5/2	1,1/1,5				
Mildsteel	3/4	2/3	1.5/2	1,1/1,5				
Die, Tool Steel	3/4	2/3	1.5/2	1,1/1,5				
Stainless Steel	3/4	2/3	1.5/2	1,1/1,5				
Nickel Alloy		2/3	1.5/2	1,1/1,5				

## Line-up of products

Band width (mm)	Band thickness (mm)	Pitch			
		1.1/1.5	1.5/2	2/3	3/4
27	0.9				●
34	1.1			●	●
41	1.3		X	●	●
54	1.3		X	X	
	1.6	X	X	●	
67	1.6	X	X		

X in planning ● standard

Printed on recycled and recyclable paper • All specifications subject to change without notice